


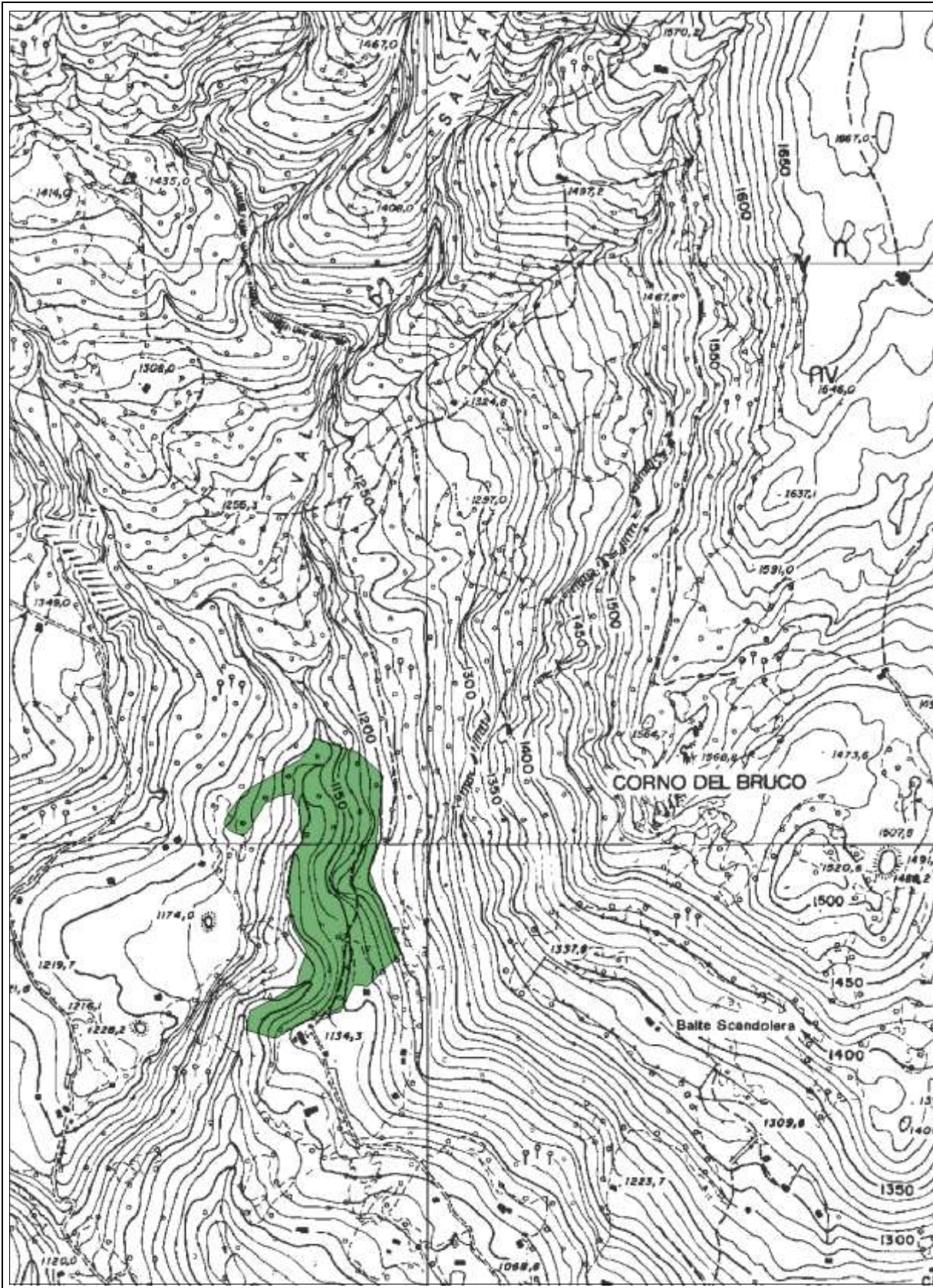
scala	superficie (ha)	Tavola CTR	Provincia Bergamo	Specie arboree:	
1:15.000	88.82	C51	Comune/i Ponte Ranica		
			Località Castello della Moretta		
				<i>Acer campestre</i>	<i>Ulmus minor</i>
				<i>Castanea sativa</i>	
				<i>Fraxinus ornus</i>	
				<i>Ostrya carpinifolia</i>	
				<i>Quercus pubescens</i>	





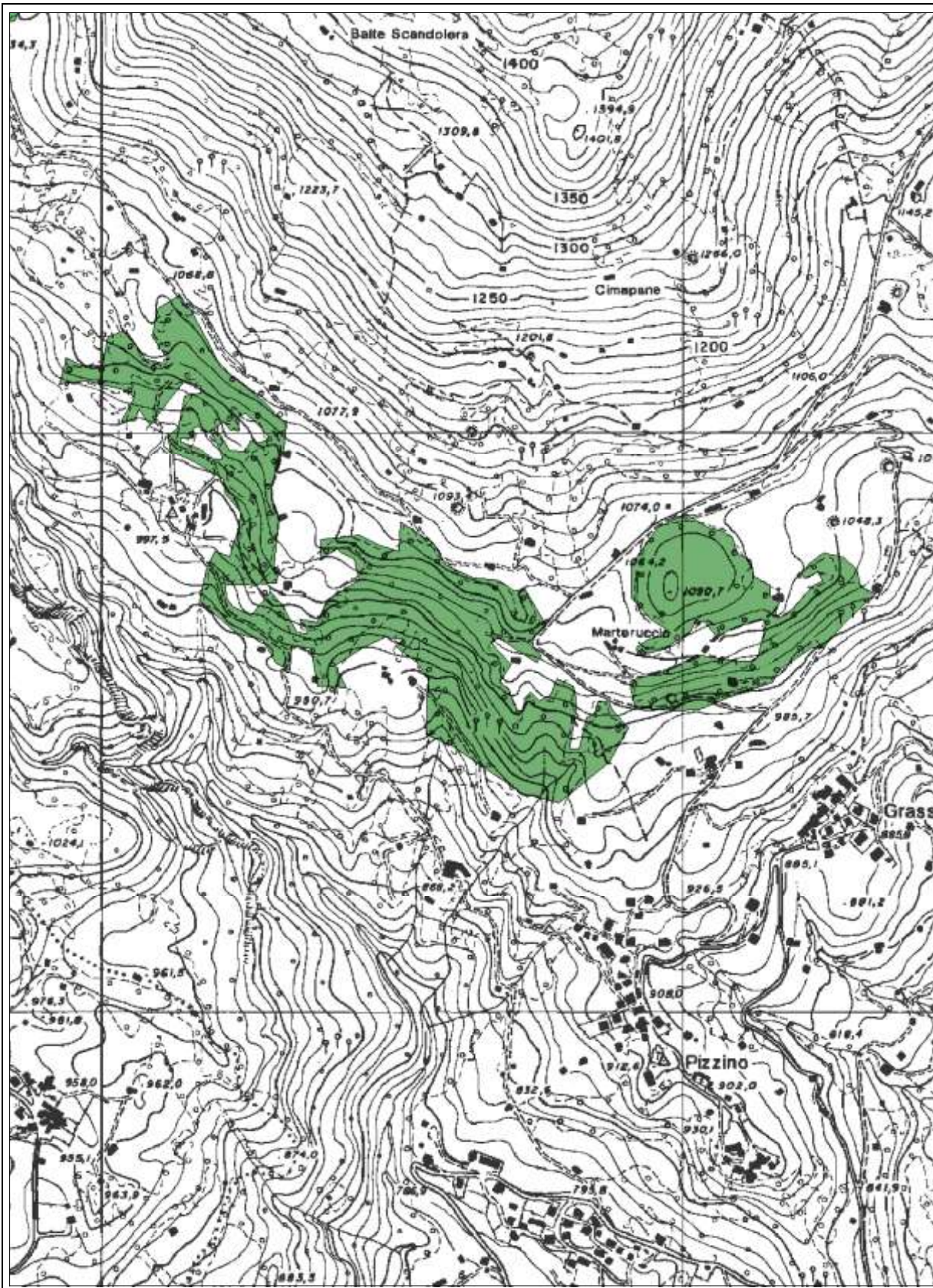
scala	superficie (ha)	Tavola CTR	Provincia Bergamo	Specie arboree:
			Comune/i Mozzo	<i>Acer campestre</i>
1:10.000	17,19	C5I	Località Colle di Mozzo	<i>Castanea sativa</i>
				<i>Ostrya carpinifolia</i>






scala	superficie (ha)	Tavola CTR	Provincia Bergamo	Specie arboree:
1:10.000	7.56	C4I	Comune/i Taleggio	
			Località Valle di Salzano	
				<i>Alnus incana</i>






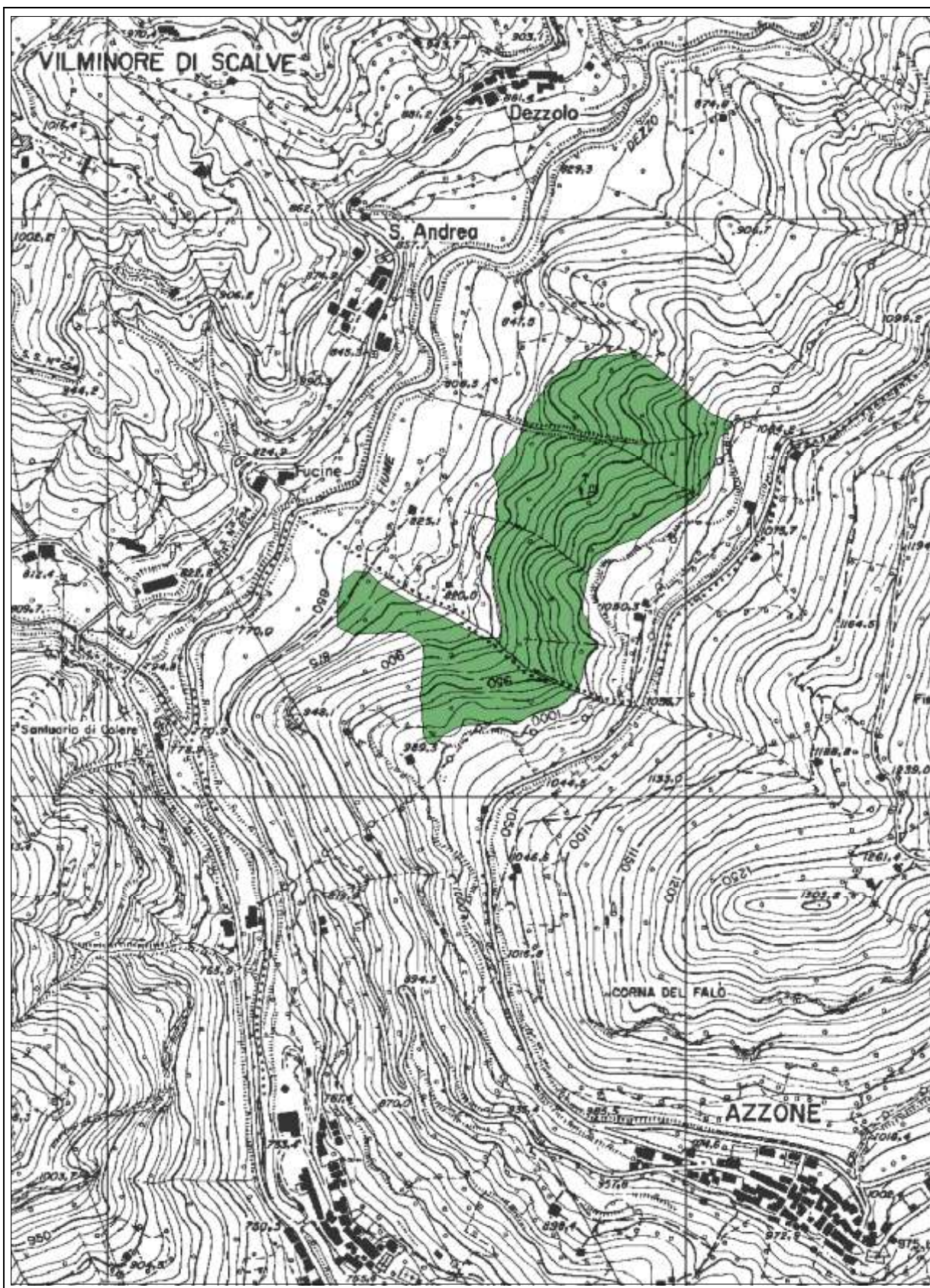
scala	superficie (ha)	Tavola CTR	Provincia Bergamo	Specie arboree:
			Comune/i Taleggio	<i>Acer pseudoplatanus</i>
1:10.000	25.49	C4I	Località Grasso-Pizzino	





scala	superficie (ha)	Tavola CTR	Provincia Bergamo	Specie arboree:
			Comune/i Valtorta	
			Località Ceresola	
1:10.000	3.65	C4I		
				<i>Acer pseudoplatanus</i>





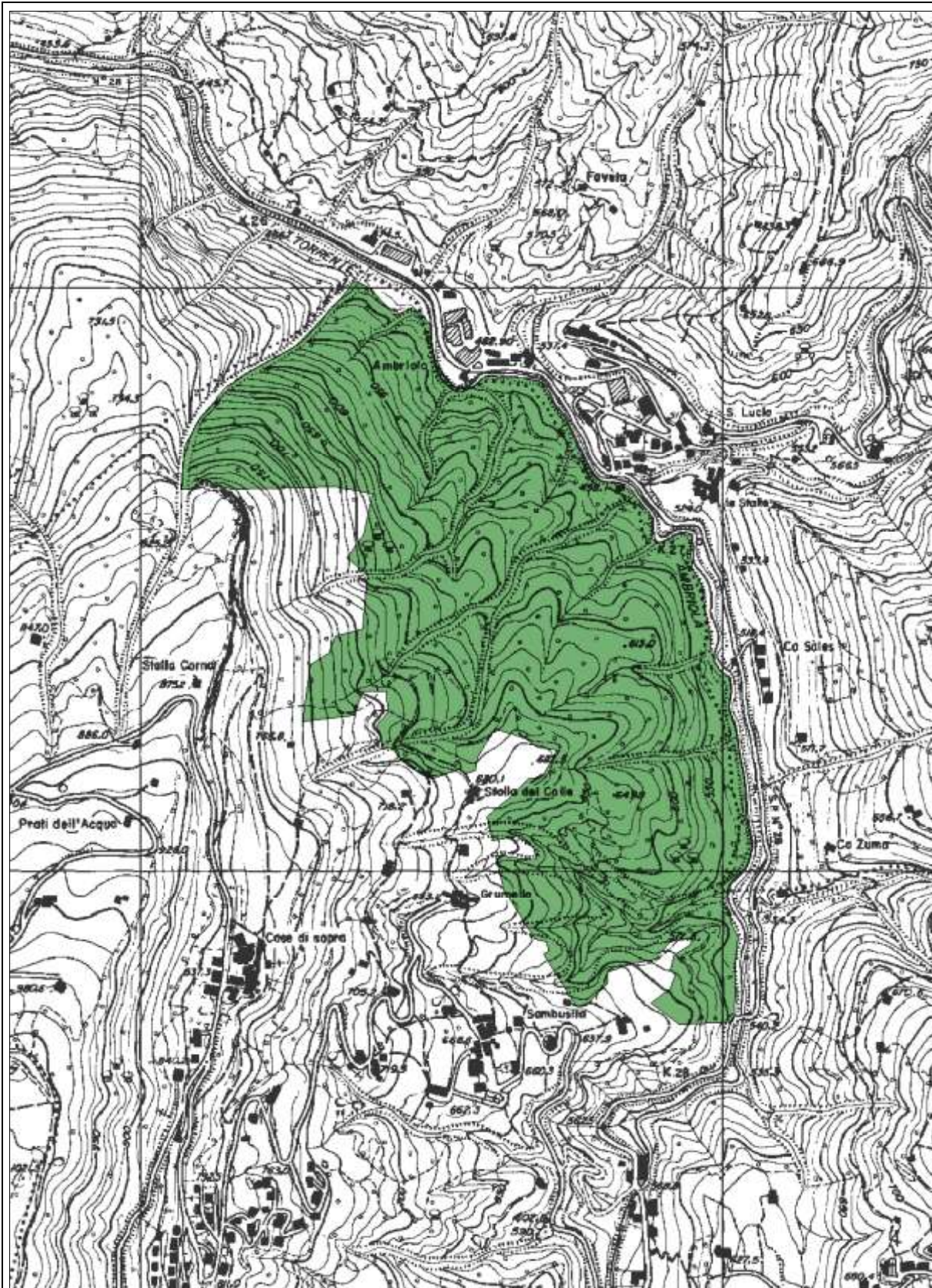
scala	superficie (ha)	Tavola CTR	Provincia	Bergamo	Specie arboree:
			Comune/i	Azzone e Vilminore di Scalve	<i>Acer pseudoplatanus</i>
			Località	Ripalunga	<i>Fraxinus excelsior</i>
					<i>Fagus sylvatica</i>


1:10.000

17.95

D4I





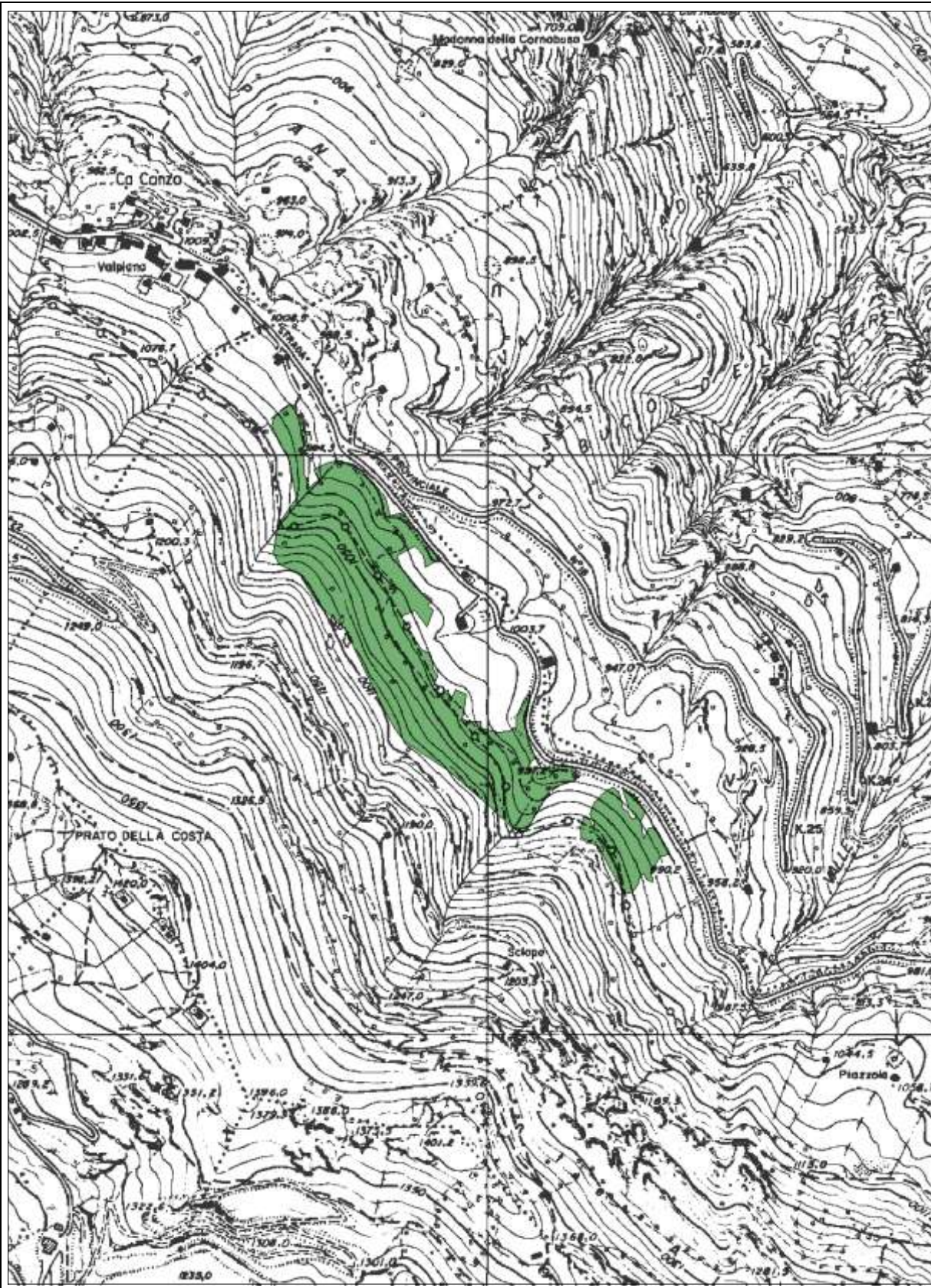
scala	superficie (ha)	Tavola CTR	Provincia Bergamo	Specie arboree:
			Comune/i Algha	
			Località Valle dell'Ambriola	
1:10.000	57.83	C4III		
				<i>Acer pseudoplatanus</i>
				<i>Tilia cordata</i>





scala	superficie (ha)	Tavola CTR	Provincia Bergamo	Specie arboree:
1:10.000	6.52	C4IIII	Comune/i Bedulita	
			Località Ca' Personeni	
				Betula pendula






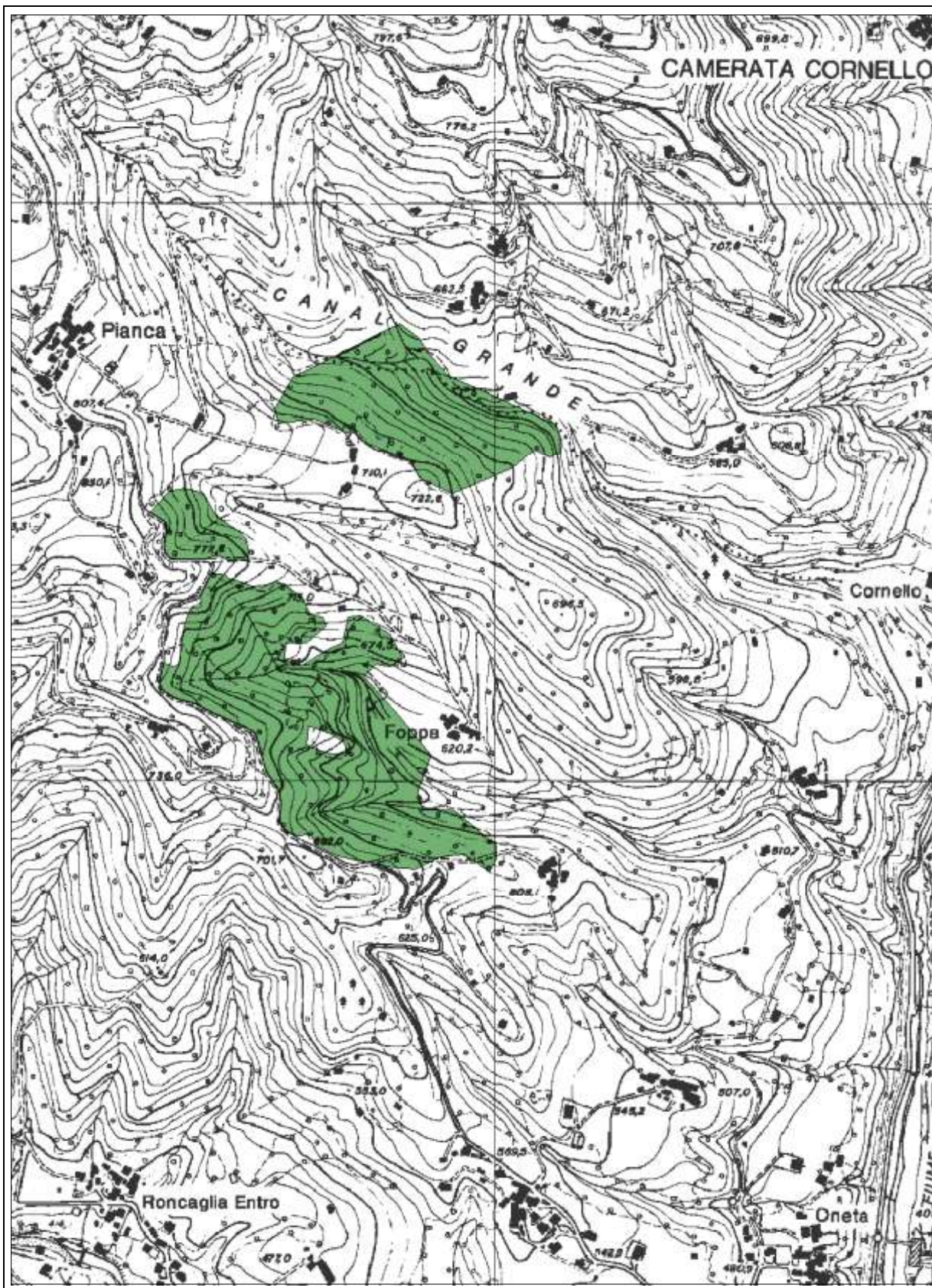
scala	superficie (ha)	Tavola CTR	Provincia Bergamo	Specie arboree:
			Comune/i Roncola	
			Località Strada per Costa Valle Imagna	
1:10.000	11.83	C4IIII		Betula pendula






scala	superficie (ha)	Tavola CTR	Provincia Bergamo	Specie arboree:
			Comune/i Taleggio	<i>Carpinus betulus</i>
1:10.000	9.16	C4III	Località Oida	






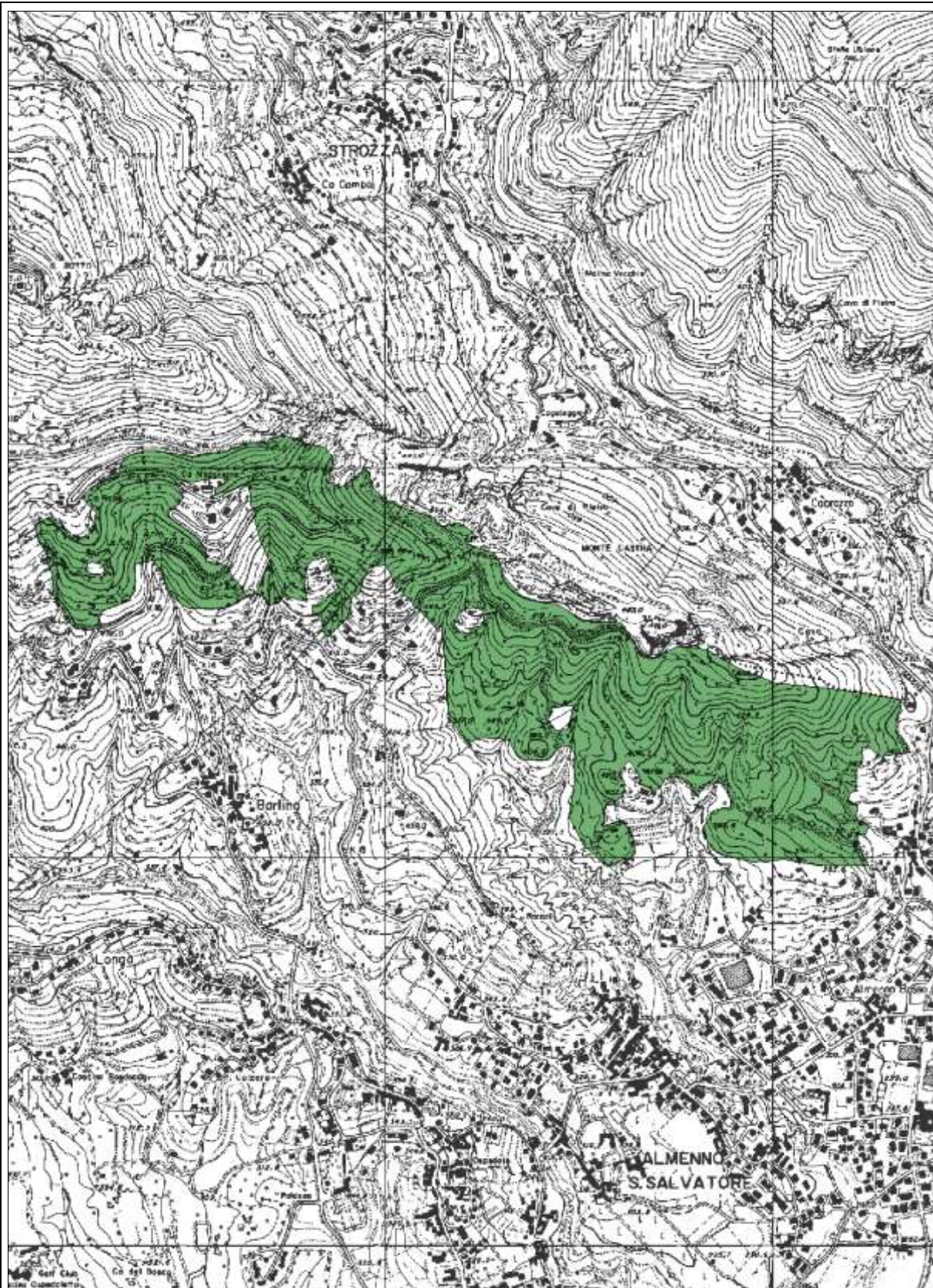
scala	superficie (ha)	Tavola CTR	Provincia Bergamo	Specie arboree:
			Comune/i S. Giovanni Bianco	<i>Castanea sativa</i>
1:10.000	22.03	C4IIII	Località Foppa-Pianca	





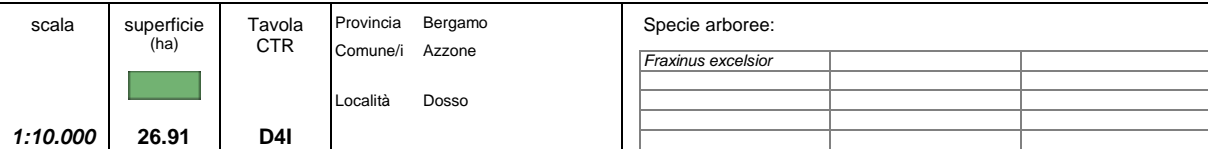
scala	superficie (ha)	Tavola CTR	Provincia Bergamo	Specie arboree:
			Comune/i Camerata Cornello	
			Località Bruga Alta	
<b>1:10.000</b>	<b>8.94</b>	<b>C4I</b>		<i>Castanea sativa</i>






scala	superficie (ha)	Tavola CTR	Provincia Bergamo	Specie arboree:
			Comune/i Almenno S. Bartolomeo/ Almenno S. Salvatore	
			Località Barlino	
1:15.000	77.21	C5I		<i>Castanea sativa</i>
				<i>Ostrya carpinifolia</i>



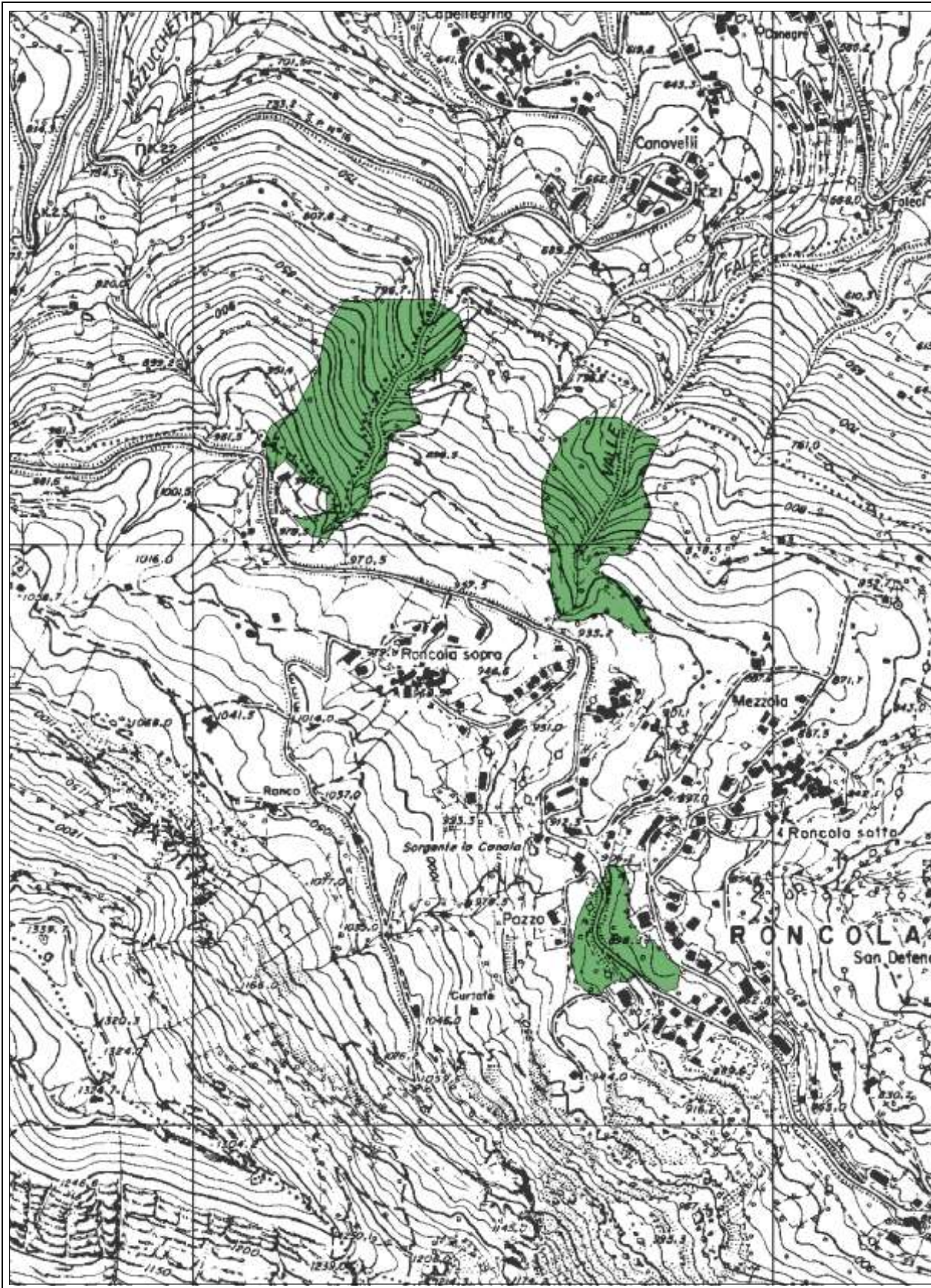






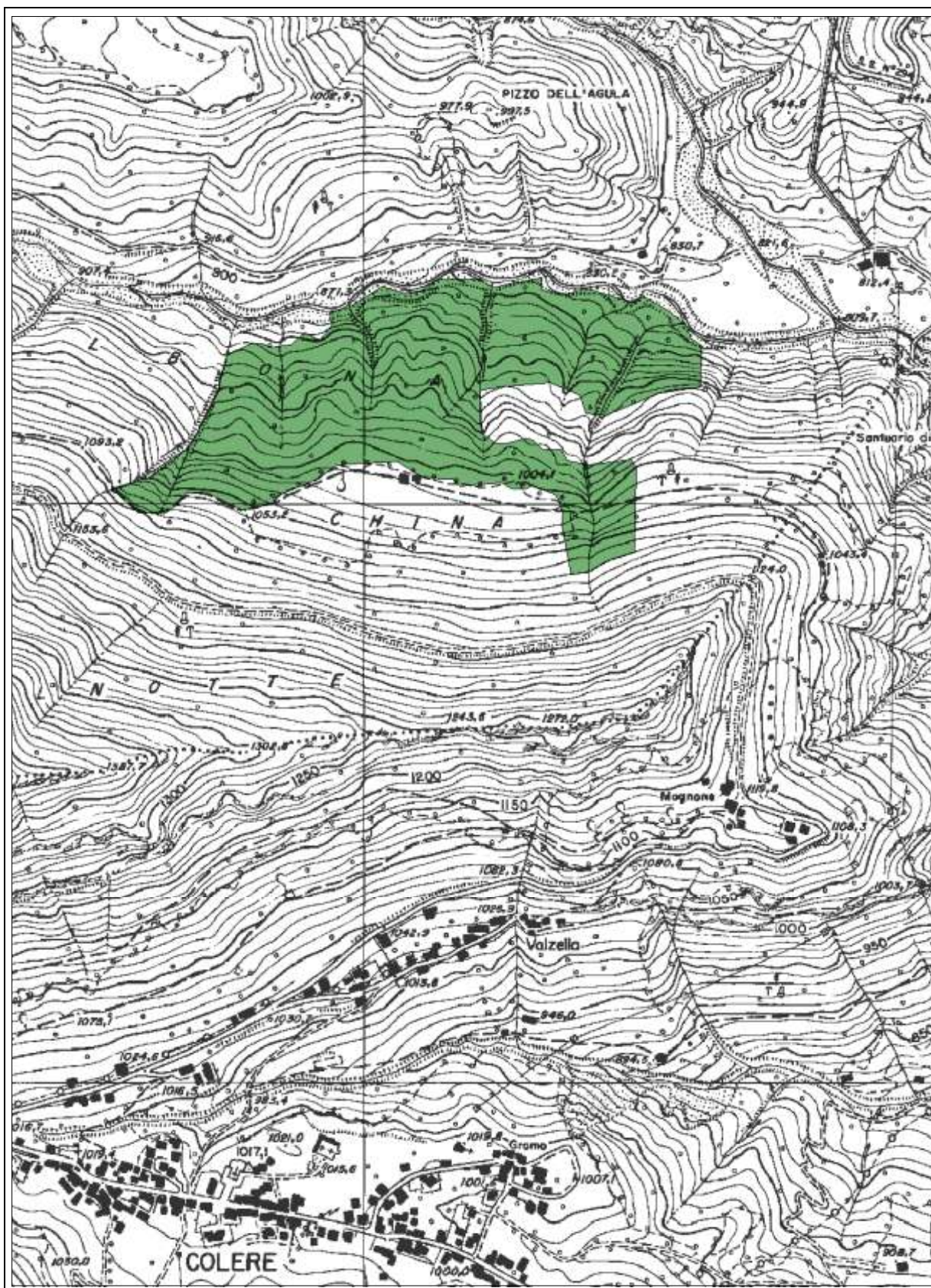
scala	superficie (ha)	Tavola CTR	Provincia Bergamo	Specie arboree:
			Comune/i Ponteranica	
			Località Castello della Moretta	
<b>1:10.000</b>	<b>6.89</b>	<b>C5I</b>		<i>Fraxinus excelsior</i>






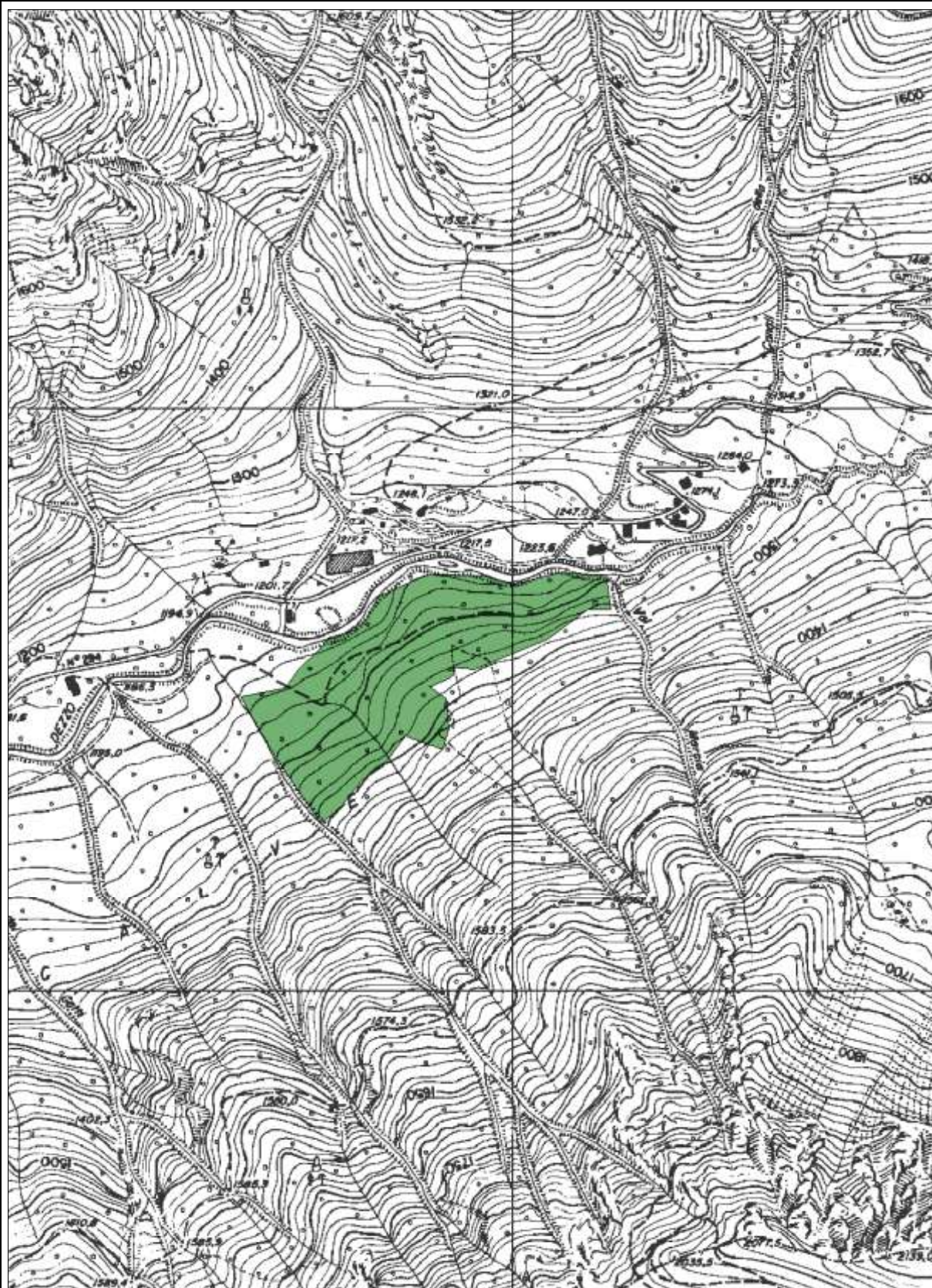
scala	superficie (ha)	Tavola CTR	Provincia Bergamo	Specie arboree:
1:10.000	14.66	C4III - C5I	Comune/i Roncola/Bedulita	
			Località Roncola Sopra	
				<i>Fagus sylvatica</i>






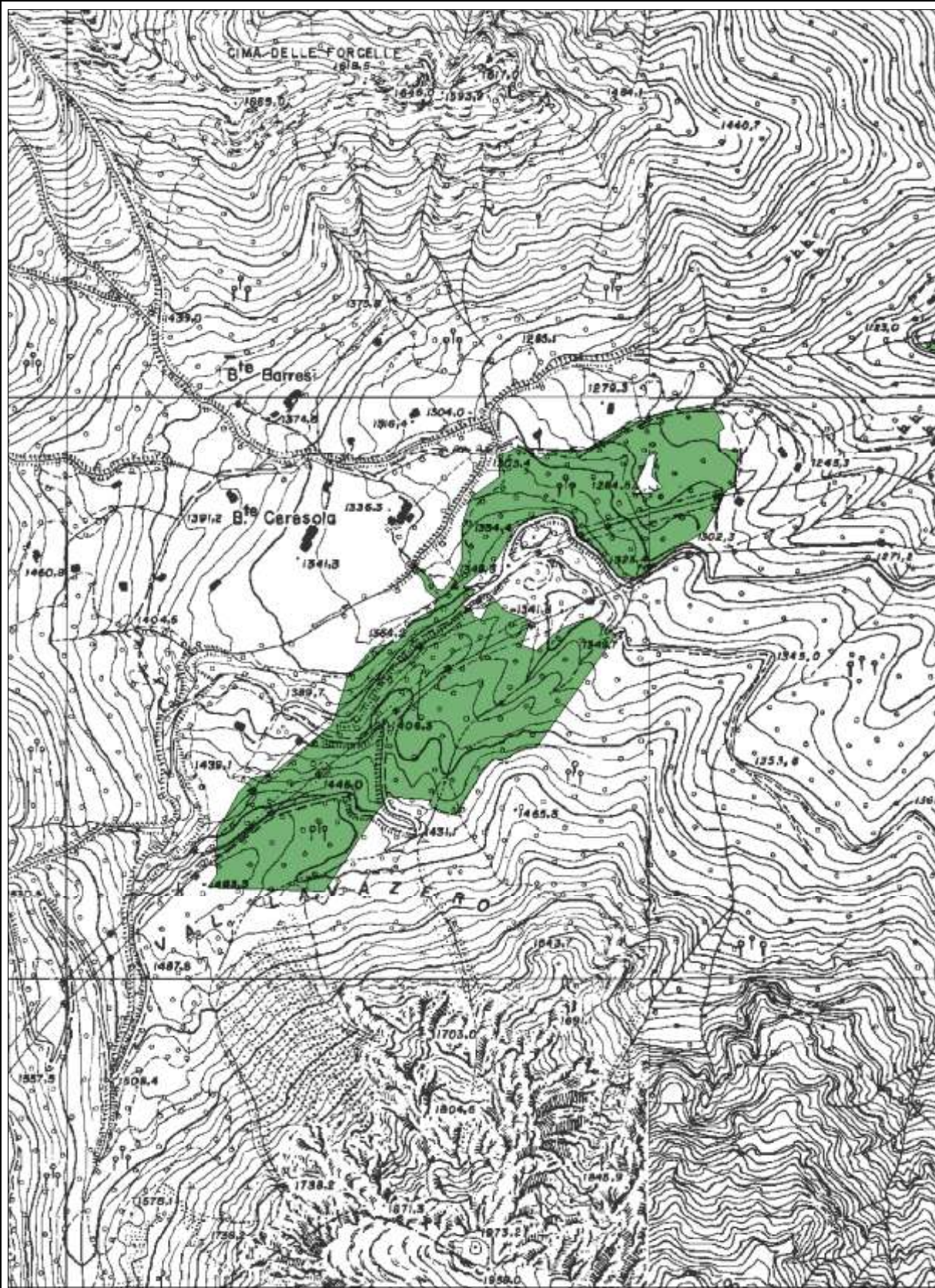
scala	superficie (ha)	Tavola CTR	Provincia Bergamo	Specie arboree:
			Comune/i Colere/Vilminore di Scalve	<i>Fagus sylvatica</i>
1:10.000	24.34	D4I	Località China	






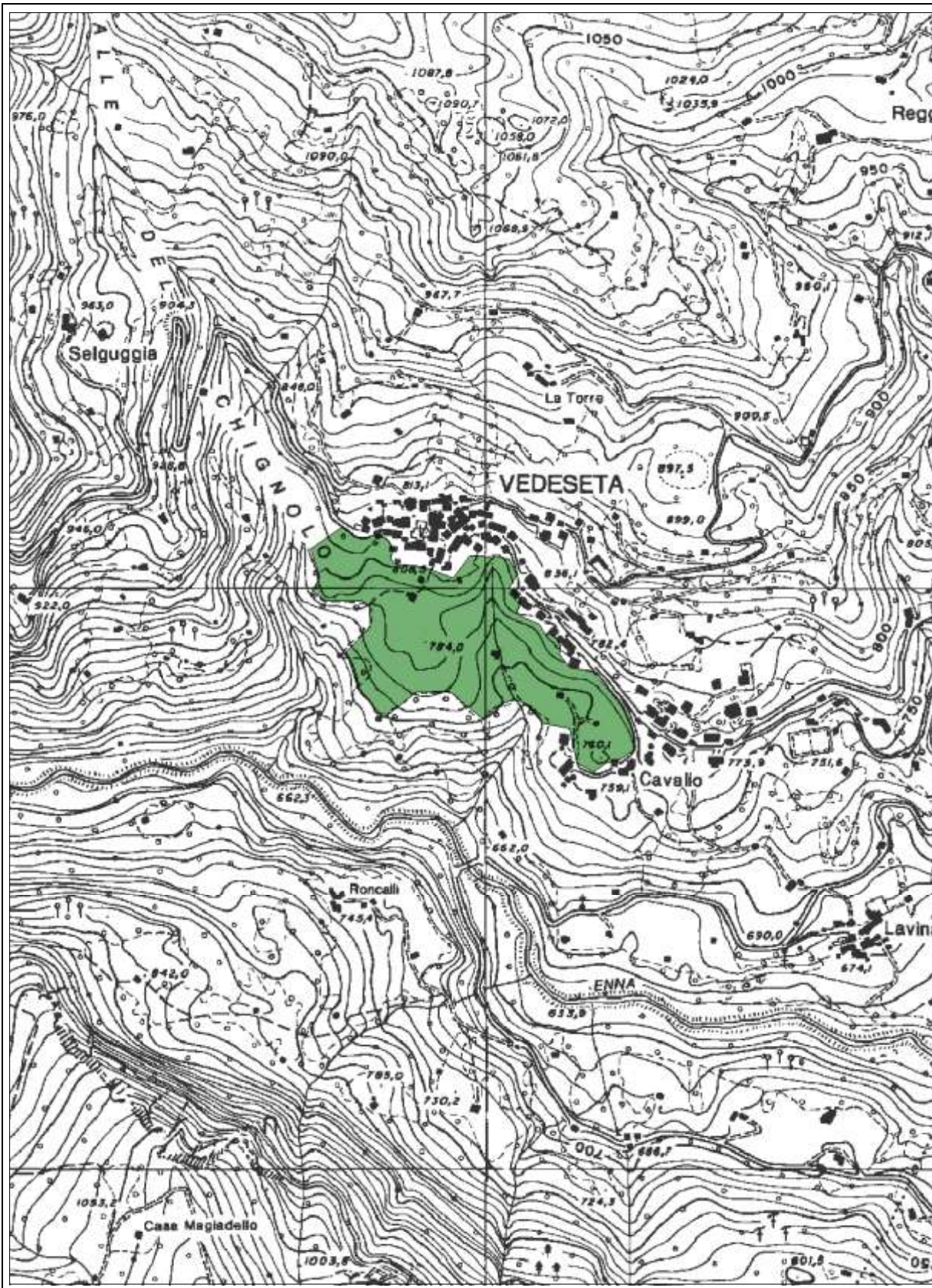
scala	superficie (ha)	Tavola CTR	Provincia Bergamo	Specie arboree:
			Comune/i Schilpario	
			Località I Fondi	
1:10.000	11.18	D3III		
				<i>Fagus sylvatica</i>






scala	superficie (ha)	Tavola CTR	Provincia Bergamo	Specie arboree:
			Comune/i Valtorta	
			Località Ceresola	
1:10.000	23.93	B4II		<i>Fagus sylvatica</i>






scala	superficie (ha)	Tavola CTR	Provincia Bergamo	Specie arboree:
			Comune/i Vedeseta	
			Località Vedeseta	
1:10.000	10.25	C4III		
				<i>Juglans regia</i>






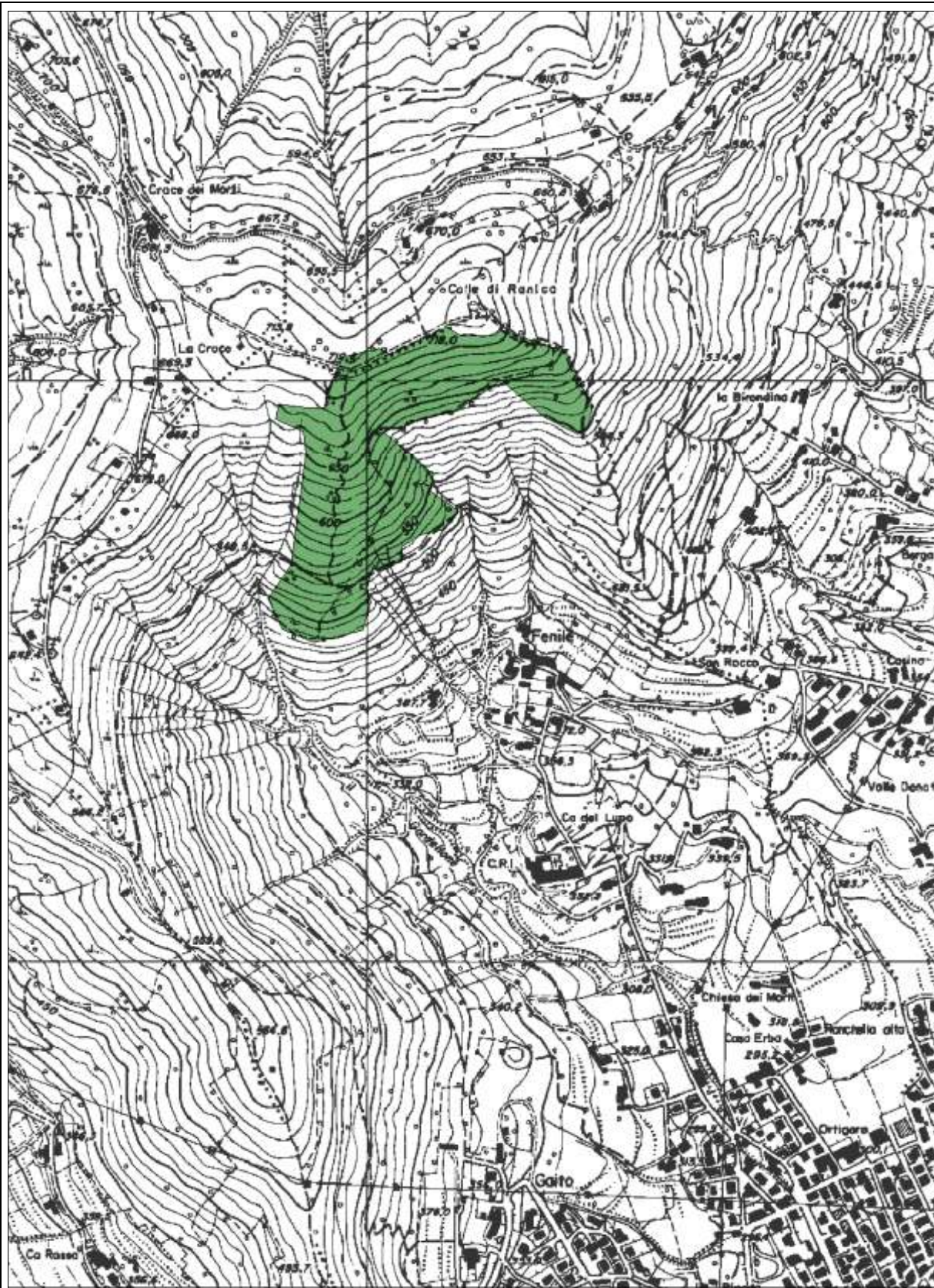
scala	superficie (ha)	Tavola CTR	Provincia Bergamo	Specie arboree:
			Comune/i Pontida	
			Località Monte Canto-S. Giuseppe	
<b>1:10.000</b>	<b>13.59</b>	<b>B5II</b>		<i>Prunus avium</i>





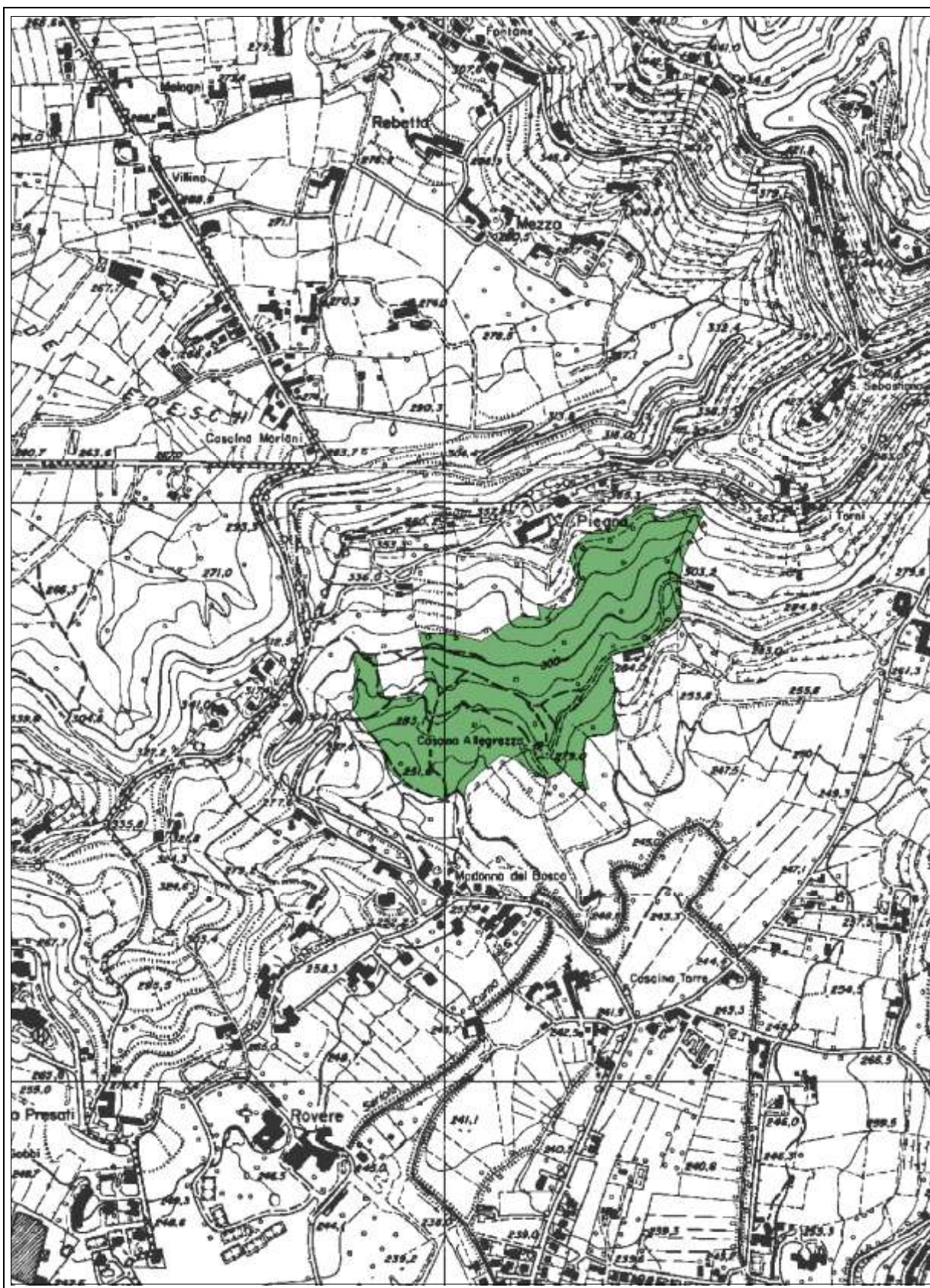
scala	superficie (ha)	Tavola CTR	Provincia Bergamo	Specie arboree:
			Comune/i Rota d'Imagna	
1:10.000	4,20	C4III	Località Val Gallone	
				<i>Quercus cerris</i>






scala	superficie (ha)	Tavola CTR	Provincia Bergamo	Specie arboree:
1:10.000	12.48	C51	Comune/i Torre Boldone	
			Località Colle della Maresana	
				Quercus cerris






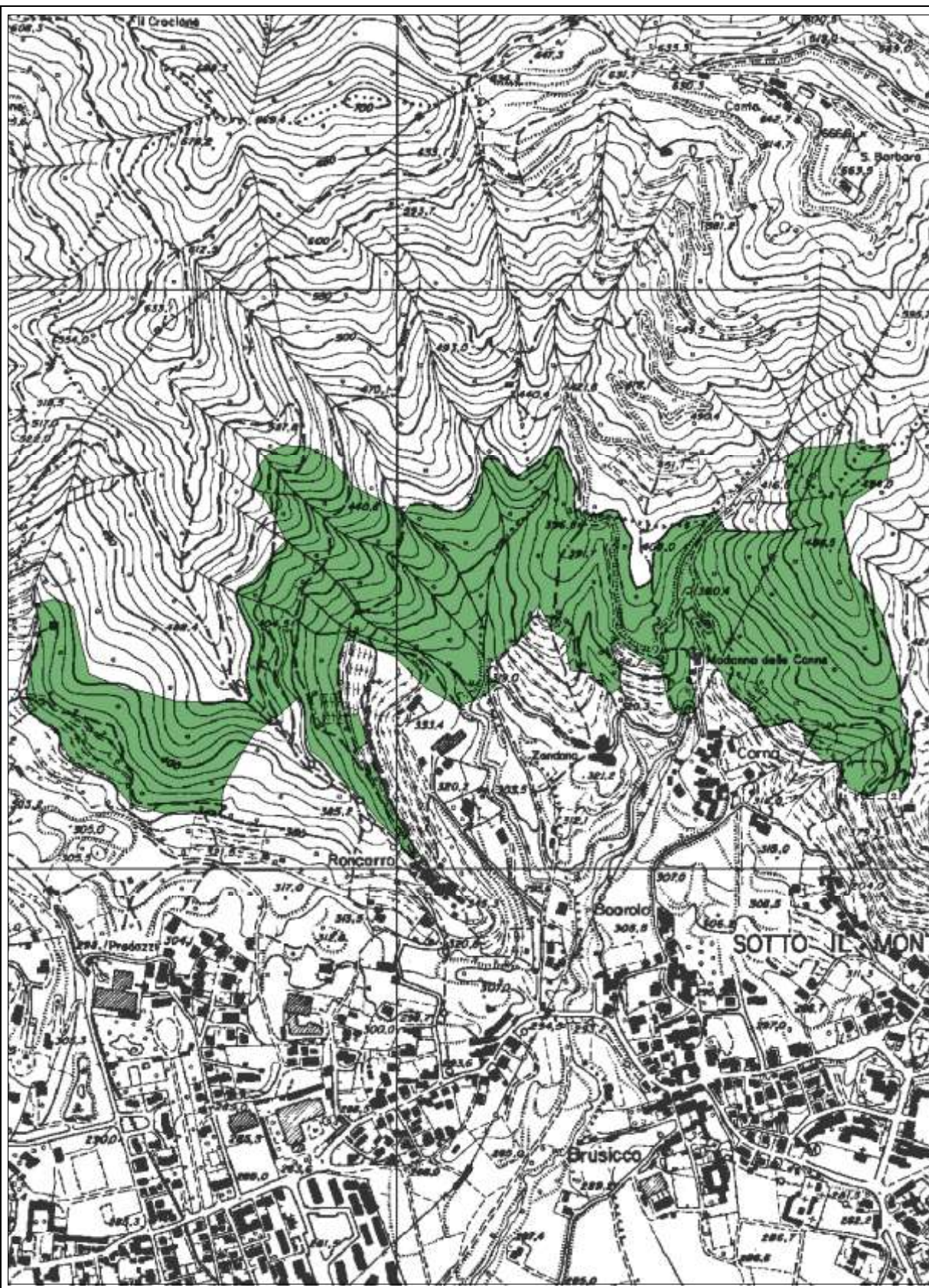
scala	superficie (ha)	Tavola CTR	Provincia Bergamo	Specie arboree:
			Comune/i Bergamo	
			Località Madonna del Bosco	
<b>1:10.000</b>	<b>13.76</b>	<b>C5I</b>		





scala	superficie (ha)	Tavola CTR	Provincia Bergamo	Specie arboree:												
			Comune/i Bergamo													
			Località Bosco dell'Allegrezza													
<b>1:10.000</b>	<b>6,30</b>	<b>C5I</b>														
				<table><tr><td><i>Quercus petraea</i></td><td></td><td></td></tr><tr><td></td><td></td><td></td></tr><tr><td></td><td></td><td></td></tr><tr><td></td><td></td><td></td></tr></table>	<i>Quercus petraea</i>											
<i>Quercus petraea</i>																






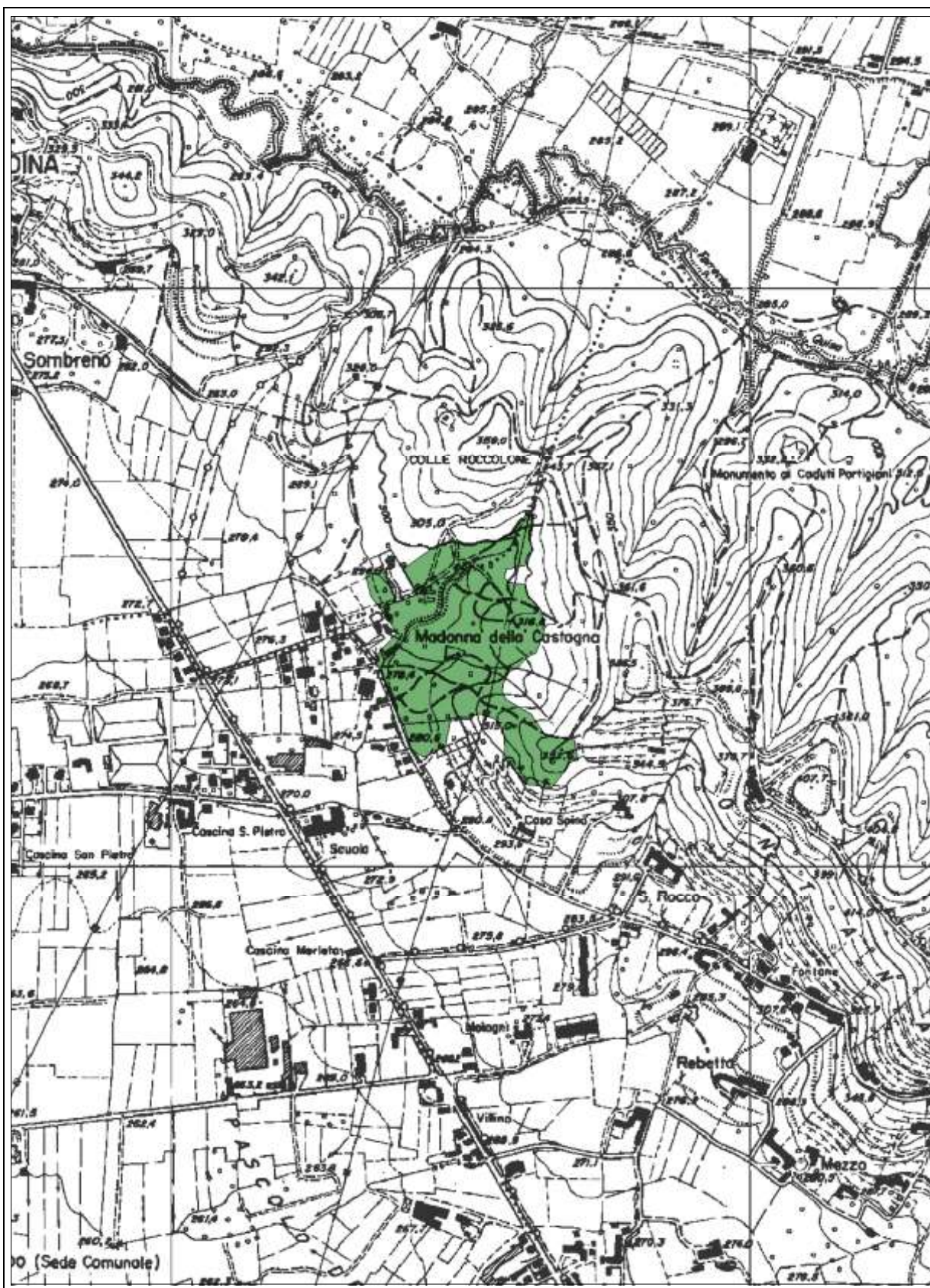
scala	superficie (ha)	Tavola CTR	Provincia Bergamo	Specie arboree:
			Comune/i Carvico/ Sotto il Monte Giovanni XXIII	<i>Quercus petraea</i>
1:10.000	46,20	B5II	Località Roncarro-Corna	






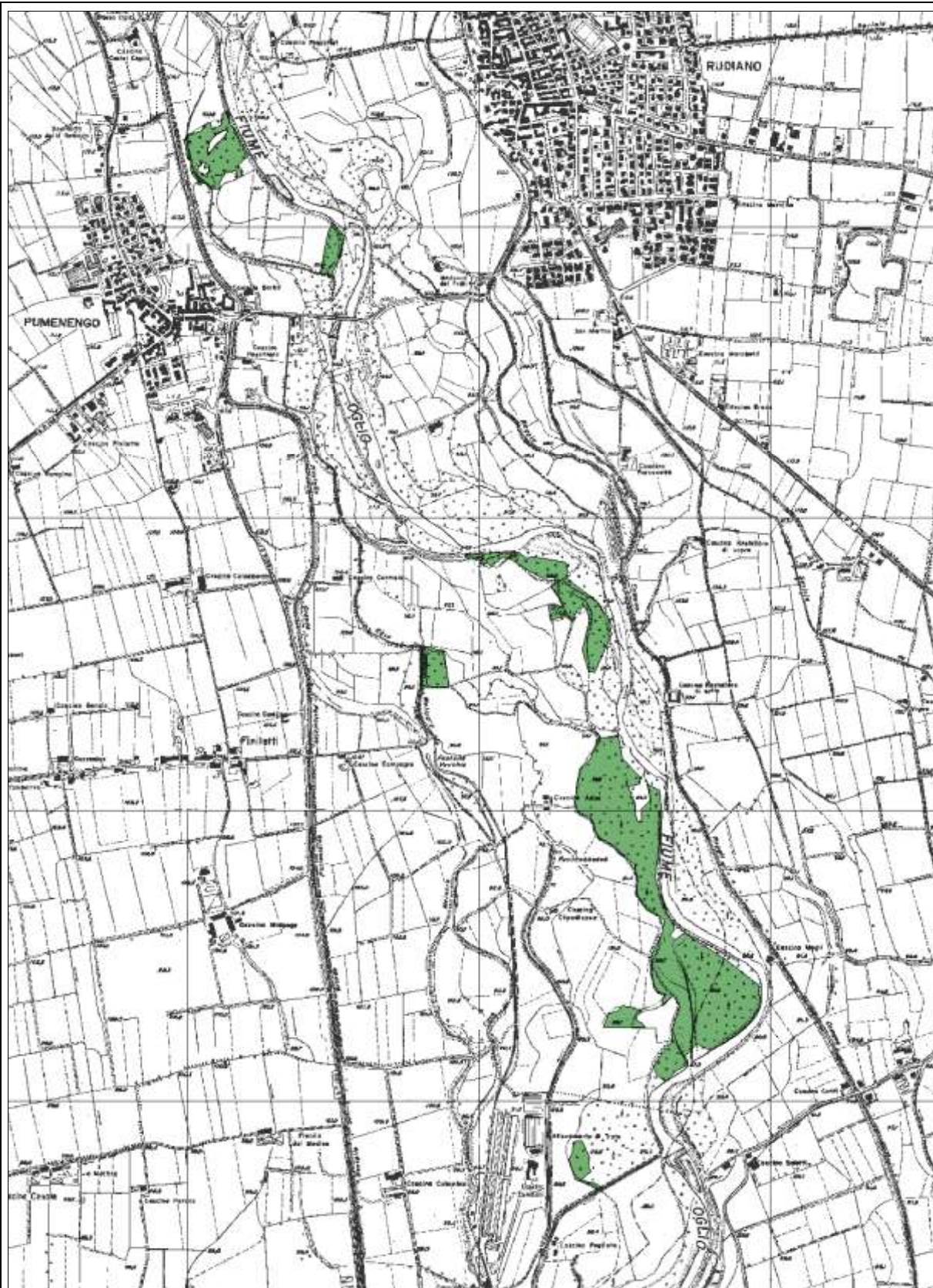
scala	superficie (ha)	Tavola CTR	Provincia Bergamo	Specie arboree:
			Comune/i Carvico	<i>Quercus pubescens</i>
1:10.000	4.55	B5II	Località Roncarro	






scala	superficie (ha)	Tavola CTR	Provincia Bergamo	Specie arboree:
			Comune/i Bergamo	<i>Quercus robur</i>
1:10.000	8.54	C5I	Località Madonna della Castagna	






scala	superficie (ha)	Tavola CTR	Provincia Bergamo	Specie arboree:															
			Comune/i Pumenengo																
			Località Fiume Oglio																
<b>1:20.000</b>	<b>30.77</b>	<b>C6II</b>																	
				<table><tr><td>Quercus robur</td><td></td><td></td></tr><tr><td></td><td></td><td></td></tr><tr><td></td><td></td><td></td></tr><tr><td></td><td></td><td></td></tr><tr><td></td><td></td><td></td></tr></table>	Quercus robur														
Quercus robur																			






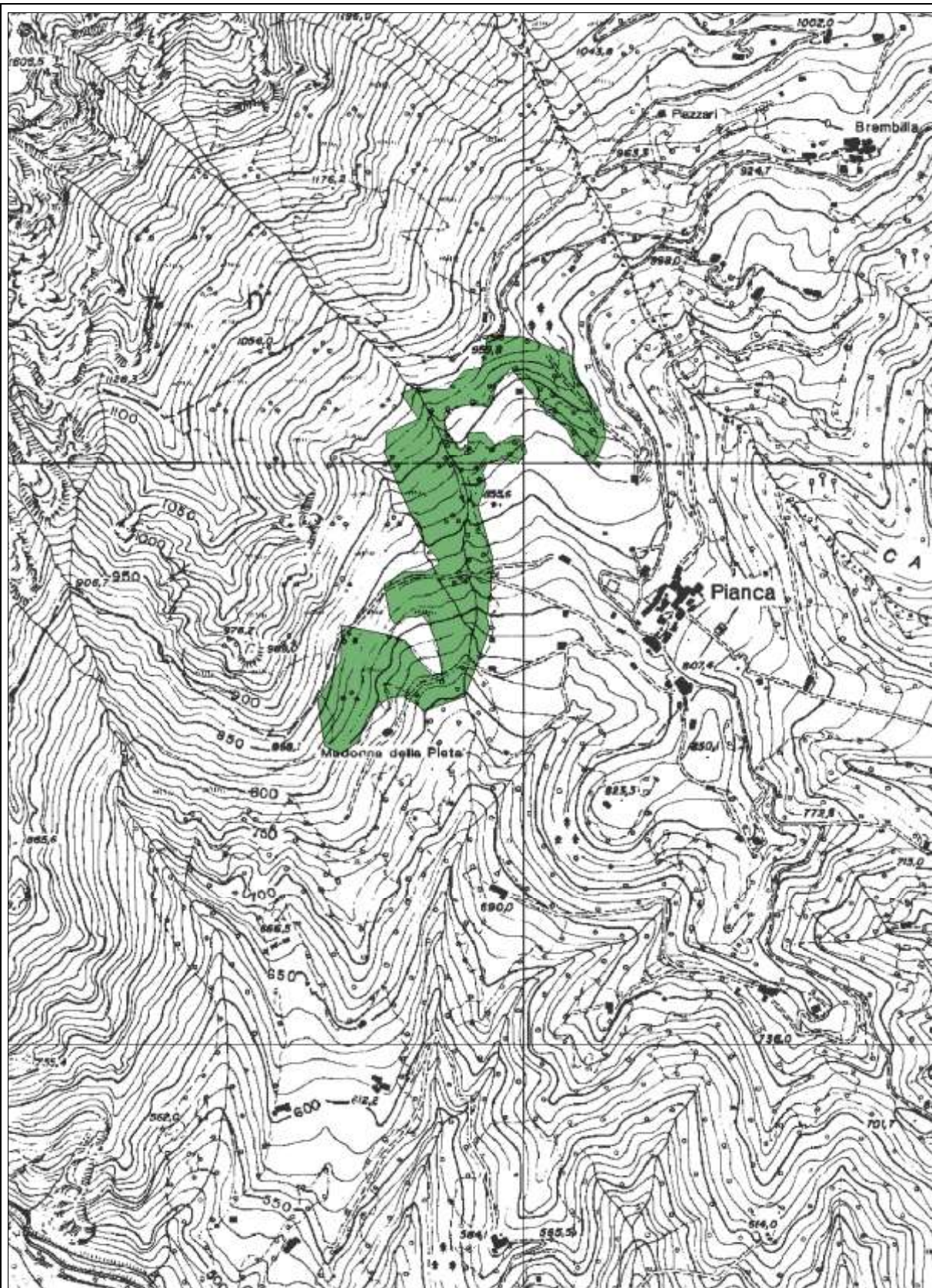
scala	superficie (ha)	Tavola CTR	Provincia Bergamo	Specie arboree:
			Comune/i Paladina/ Sorisole	
			Località Piana di Petosino	
<b>1:10.000</b>	<b>8.18</b>	<b>C5I</b>		





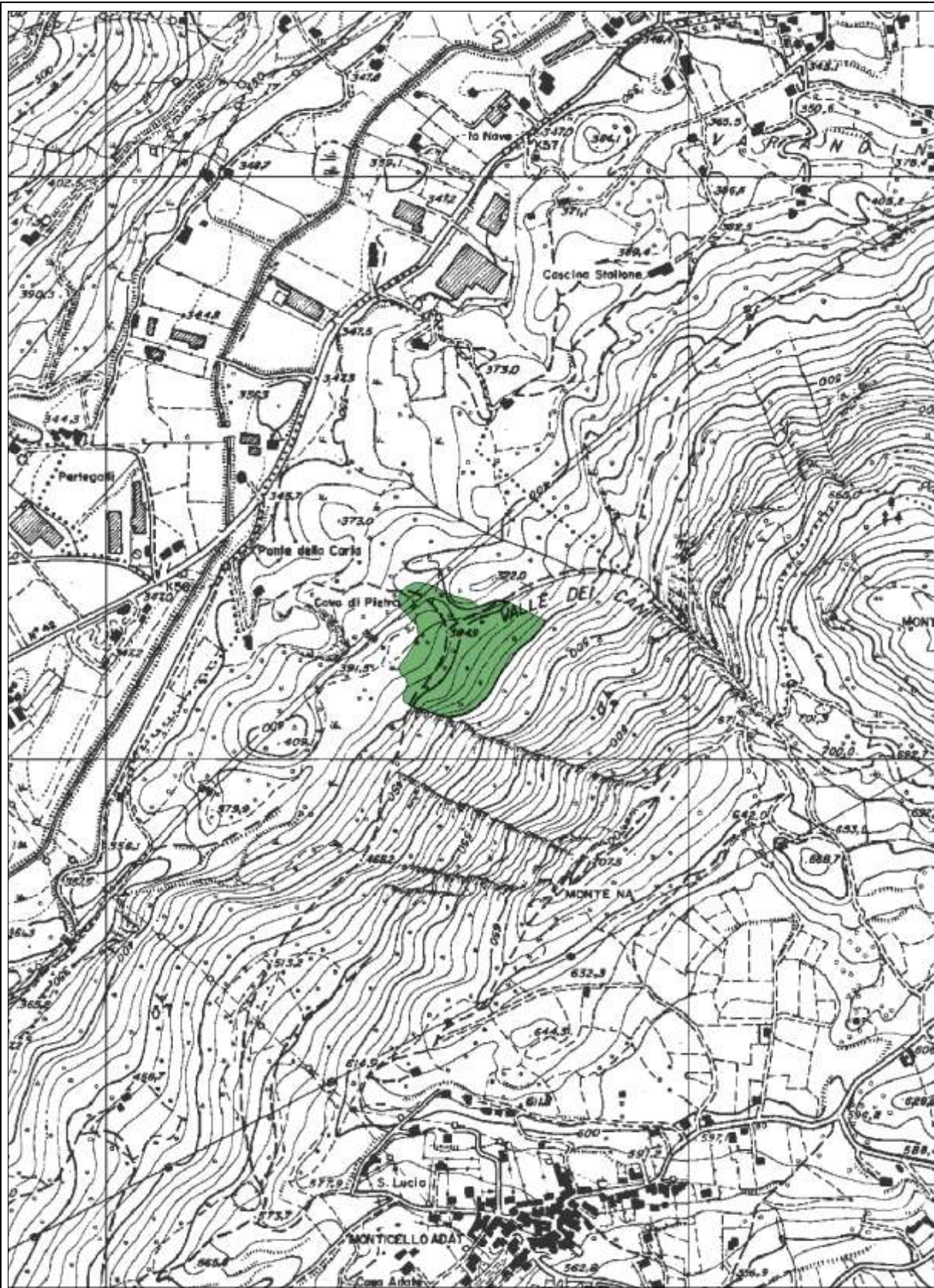
scala	superficie (ha)	Tavola CTR	Provincia Bergamo	Specie arboree:
			Comune/i Mapello	<i>Quercus robur</i>
1:10.000	2.93	C51	Località Ca' Mozzaglio	





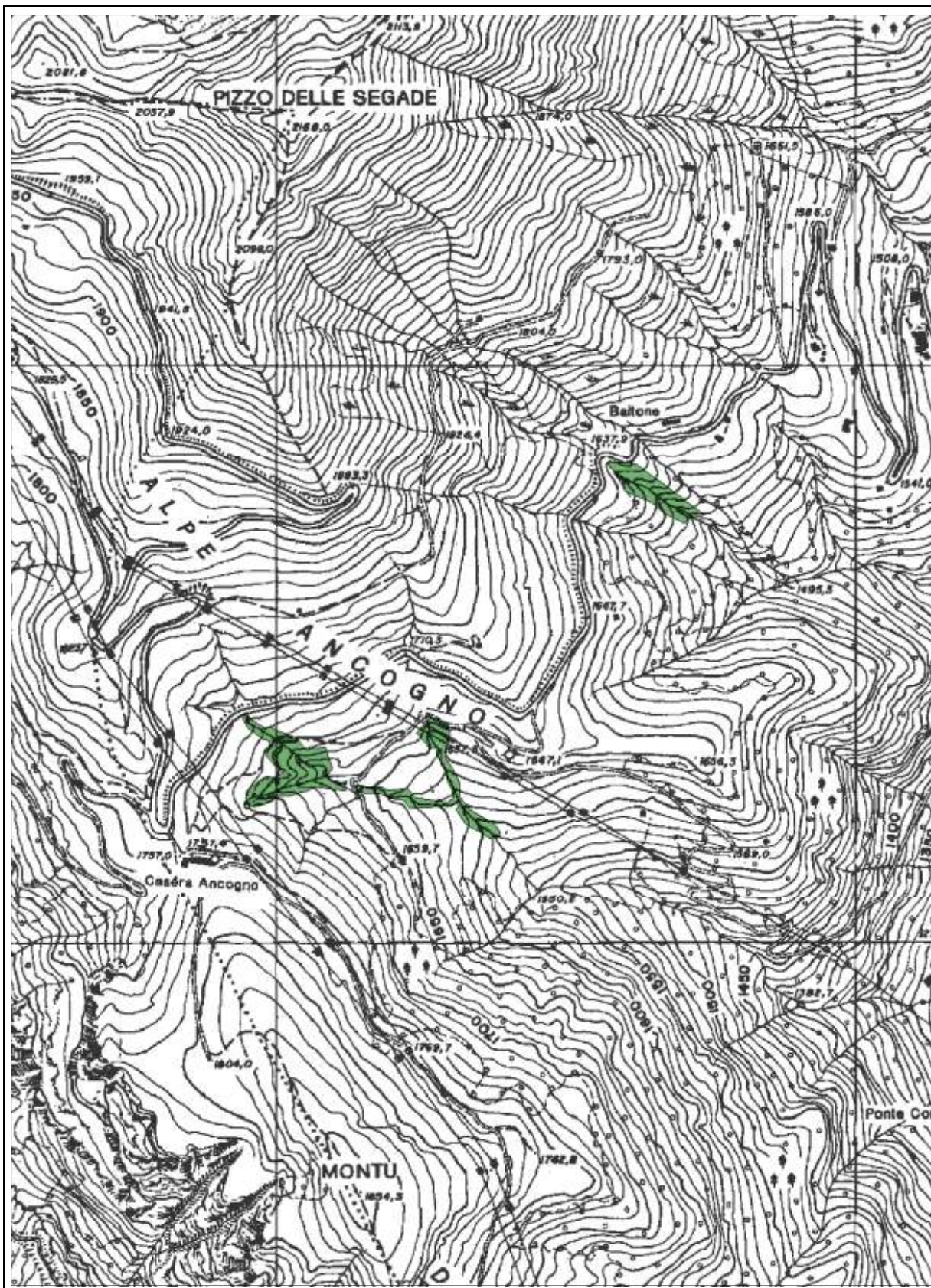
scala	superficie (ha)	Tavola CTR	Provincia Bergamo	Specie arboree:
1:10.000	11.28	C4I	Comune/i S. Giovanni Bianco	
			Località Pianca	
				<i>Sorbus aria</i>





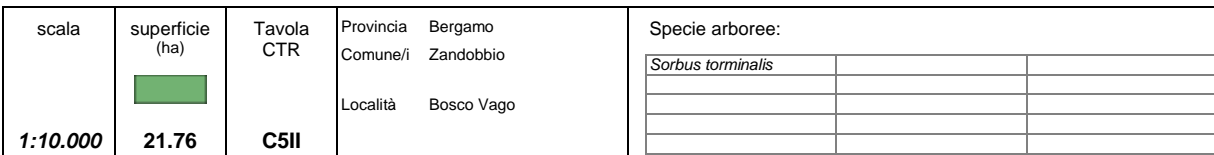
scala	superficie (ha)	Tavola CTR	Provincia Bergamo	Specie arboree:
1:10.000	3,60	C4IV	Comune/i Solto Collina	
			Località Riserva Naturale Valle del Freddo	
				<i>Sorbus aria</i>



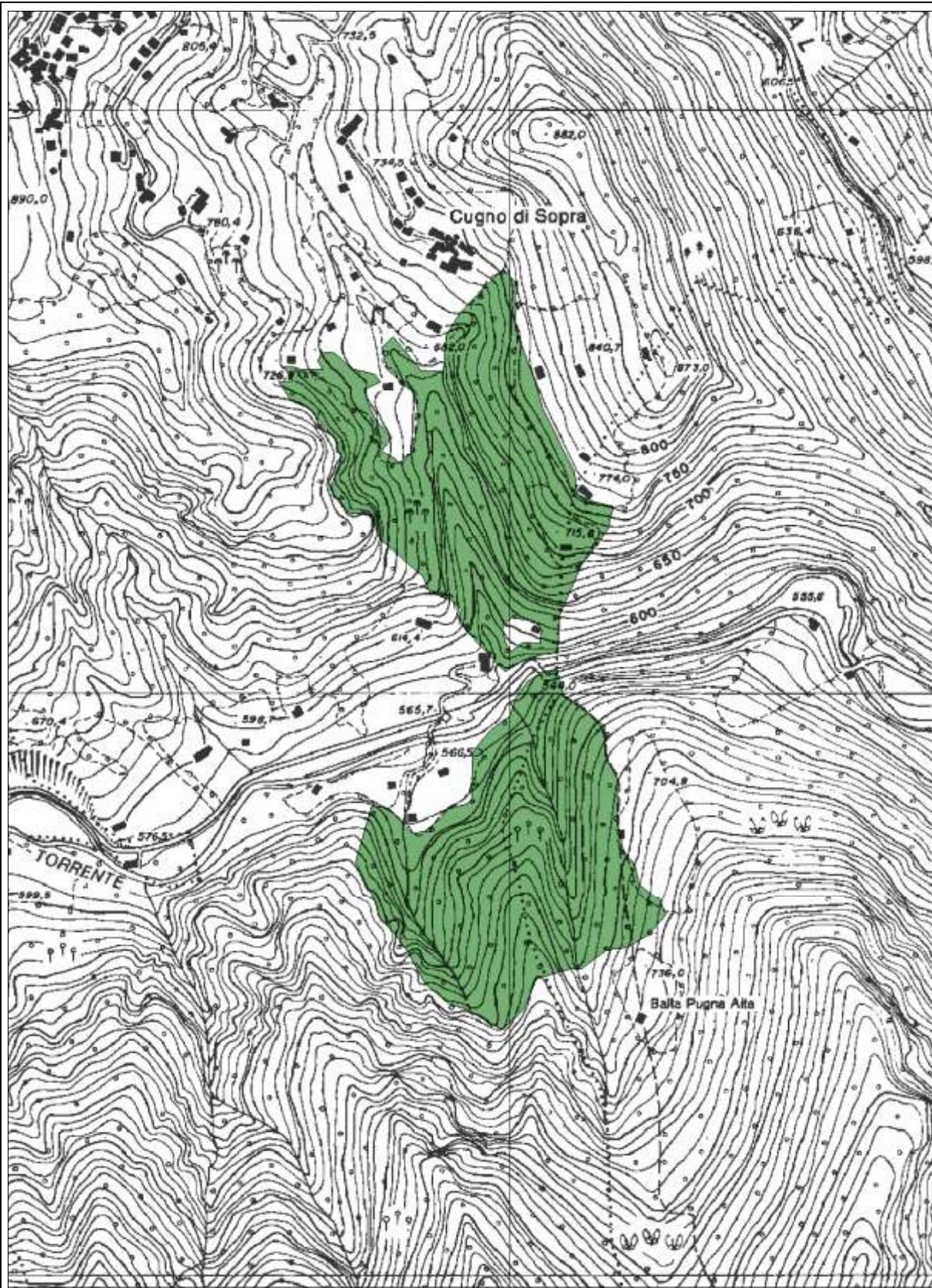


scala	superficie (ha)	Tavola CTR	Provincia Bergamo	Specie arboree:
1:10.000	2.59	C3III	Comune/i Mezzoldo	
			Località Alpe Ancogno	
				<i>Sorbus aucuparia</i>



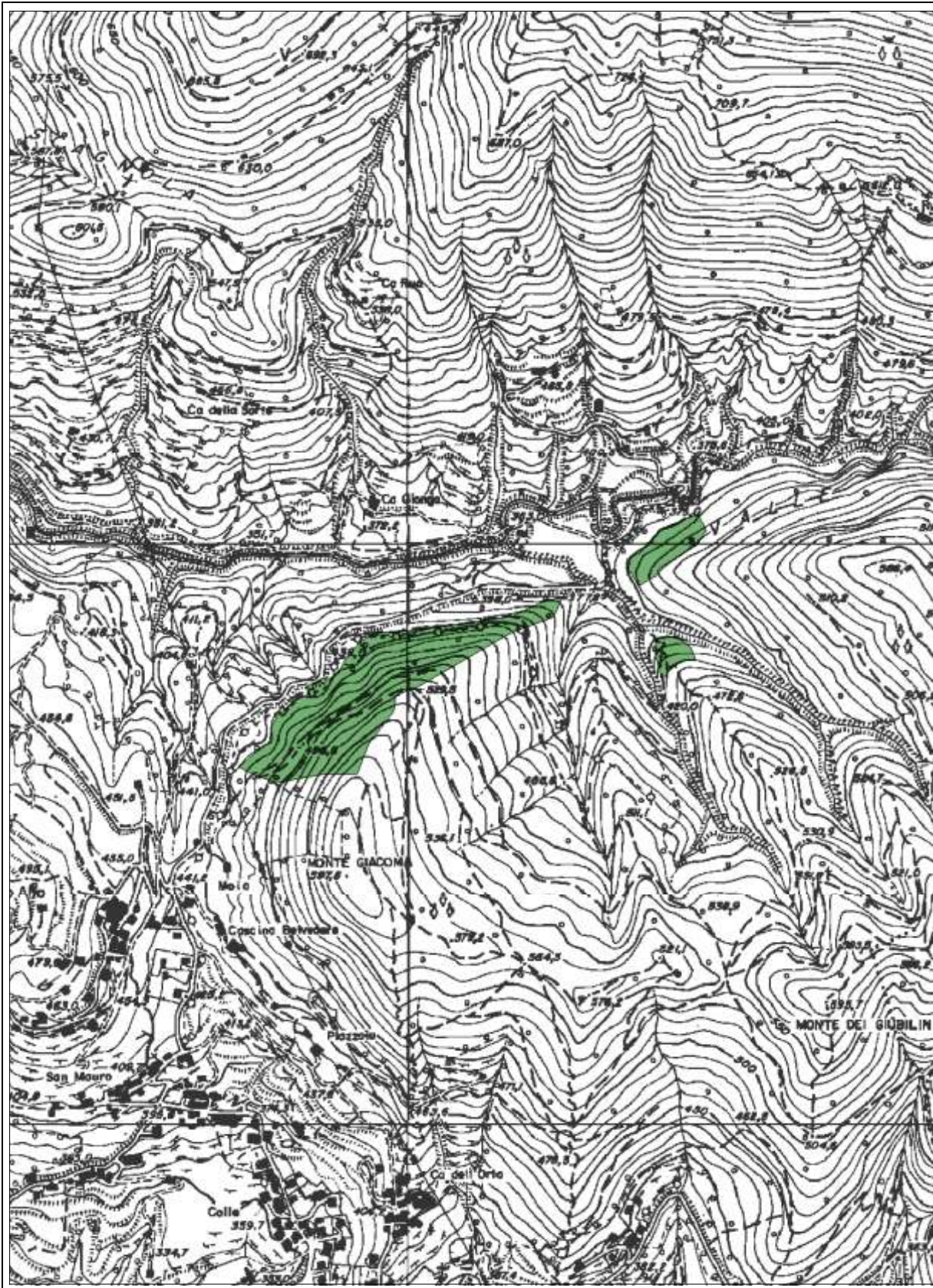






scala	superficie (ha)	Tavola CTR	Provincia Bergamo	Specie arboree:
1:10.000	34.95	C4I	Comune/i Olmo al Brembo/ S. Brigida	<i>Tilia cordata</i>
			Località Cugno	






scala	superficie (ha)	Tavola CTR	Provincia Bergamo	Specie arboree:
1:10.000	6.35	C51	Comune/i Villa d'Almè	
			Località Valle del Giongò	
				<i>Tilia cordata</i>





scala	superficie (ha)	Tavola CTR	Provincia Bergamo	Specie arboree:															
			Comune/i Paladina																
			Località Sombreno																
<b>1:10.000</b>	<b>8.63</b>	<b>C5I</b>																	
				<table><tr><td><i>Ulmus minor</i></td><td></td><td></td></tr><tr><td></td><td></td><td></td></tr><tr><td></td><td></td><td></td></tr><tr><td></td><td></td><td></td></tr><tr><td></td><td></td><td></td></tr></table>	<i>Ulmus minor</i>														
<i>Ulmus minor</i>																			